

1 9 9 8



CONQUER THE WAVES

SYLVAN
I B E R G L A S S



SYLVAN

Style with a dash of flair best describes this year's distinctive lineup of Sylvan fiberglass boats.

You'll be the talk of the lake in your new eye-catching Sylvan boat. Enjoy exhilarating times with close friends and experience more fun than you can imagine.

Leisure and relaxation will abound as you take control and express your utmost desires and dreams. Feel the warm sun on your skin and the breeze in your hair, lifting your emotions to a new unforgettable high.

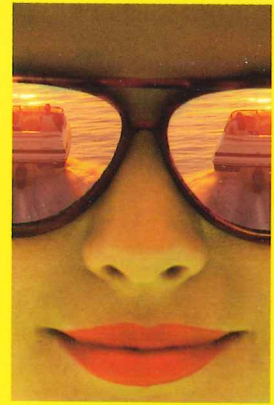
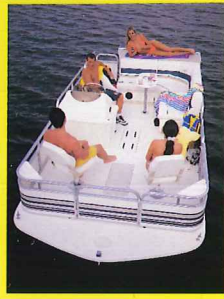


CONNO

T H E

FANTASTIC...

FIBERGLASS BOATS!



4W

...yage to your special hideaway cove for a laid-back
...oon or shift into a high-spirited and fun-packed day,
...g your worries behind. Challenge the rolling wakes
...ur favorite ski run, and share tall stories at the end of the
...ng by your glowing campfire.

...dventure awaits you and your family. Whether enjoying
...plashing waves of the day or the cool and calm of the evening
... fond memories will be yours for a lifetime as reflected by
...ng smiles, cherished times and many safe water outings.

...ow, sit back, relax and imagine yourself in one of our
...n fiberglass boats as you journey with us to
...quer the Waves" in 1998!

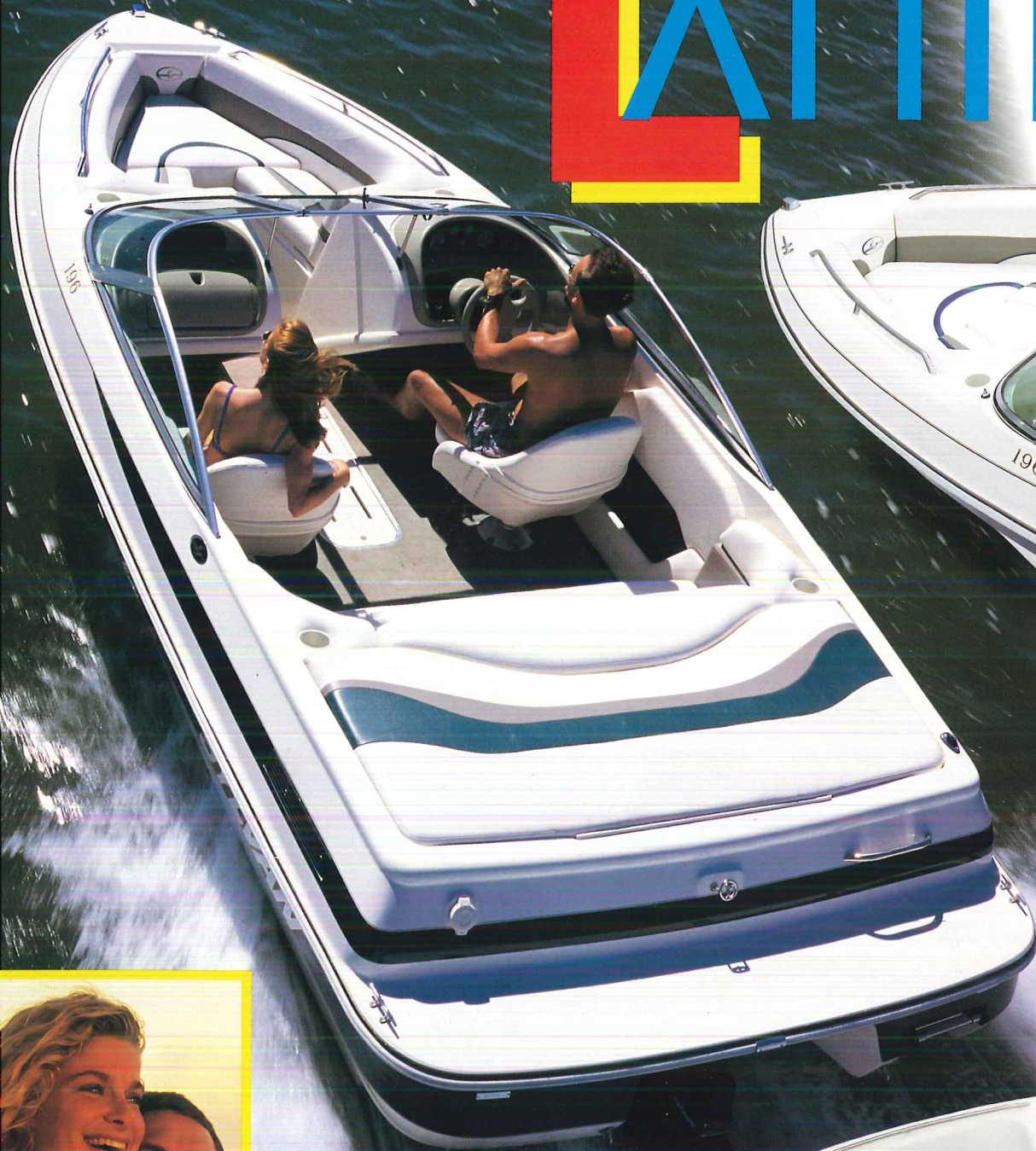
WAVES
QUER



CONQUER THE WAVES

V210 / V196

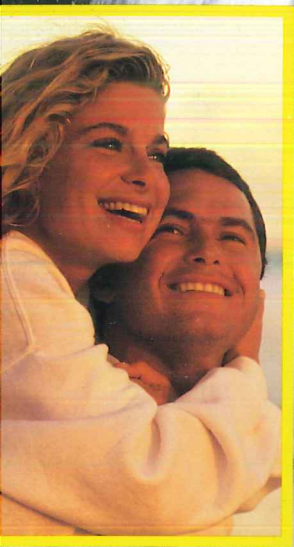
EXHIBIT



V196 Sport I/O



V196 Sport I/O



EXCITATING



MORE FUN...

Experience the fun, exhilarating ride and total comfort as you slice through the waves on your way to the ultimate enjoyment.

V210 SPORT STANDARDS

37-gal. built-in gas tank • Full instrumentation with depth finder • Tilt steering • Port side dash cooler with drain • Sony AM-FM cassette with 4 Sony marine speakers • 12-volt accessory plug • Horn • 6 cup holders • Igloo cooler • Stainless steel bow rails • Stainless steel grab handle • Stern ladder • 4 stainless steel cleats • In-floor storage • Ski ring • Removable bow lounge cushion • Running lights • Bilge pump & blower • Roto-cast seat bases • Rear sundeck with bench seat • 2 captain's chairs with sliders • Knit back expanded vinyl with high density foam • Under seat storage • Walk-thru curved glass windshield • Color-coordinated self-storing top & boot

Colors: Emerald • Blue

V210 SPORT OPTIONS

Side and aft curtains • Bow cover • Mooring cover

V196 SPORT STANDARDS

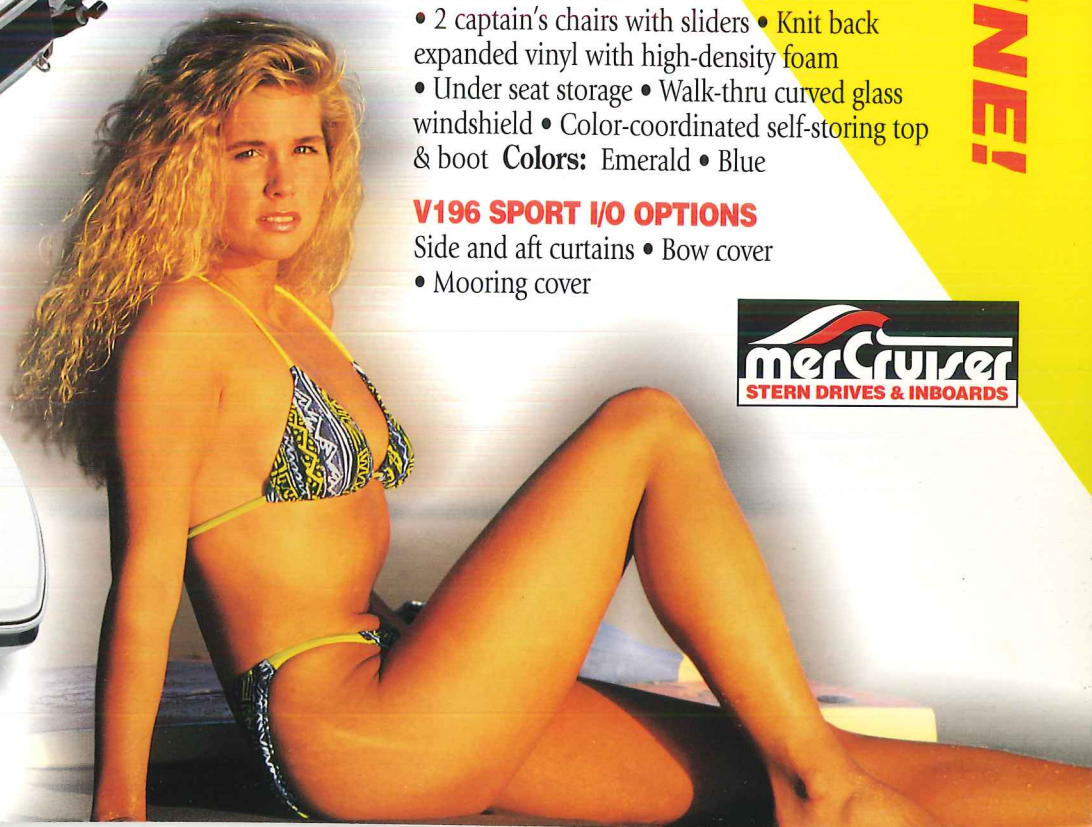
37-gal. built-in gas tank • Full instrumentation with depth finder • Tilt steering • Port side dash cooler with drain • Sony AM-FM cassette with 4 Sony marine speakers • 12-volt accessory plug • Horn • 6 cup holders • Igloo cooler • Stainless steel bow rails • Stainless steel grab handle • Stern ladder • 4 stainless steel cleats • In-floor storage • Ski ring • Removable bow lounge cushion • Running lights • Bilge pump & blower • Roto-cast seat bases • Rear sundeck with bench seat • 2 captain's chairs with sliders • Knit back expanded vinyl with high-density foam • Under seat storage • Walk-thru curved glass windshield • Color-coordinated self-storing top & boot

V196 SPORT I/O OPTIONS

Side and aft curtains • Bow cover • Mooring cover



V210 Sport I/O



THAN YOU CAN IMAGINE!



CONQUER THE WAVES

**V180 I/O
VIPER O.B.**

EXPRESS



V180 Sport I/O

SYLVAN

VE



TOTAL...

EMOTIONAL HIGH!



V180 Viper O.B.

Take control, lift your emotions and express yourself with a splash of style and a touch of grace, capturing the dreamer's eye.

V180 SPORT I/O STANDARDS

- 37-gal. built-in gas tank • Full instrumentation • Port side dash cooler with drain
 - Craig AM-FM cassette with 2 marine speakers • 12-volt accessory plug • Horn
 - Cup holders • Stainless steel grab handle • Stern ladder • 4 stainless steel cleats • In-floor storage • Ski ring • Running lights • Bilge pump & blower
 - Roto-cast seat bases • Rear sundeck with bench seat • 2 captain's chairs with sliders • Knit back expanded vinyl with high-density foam • Under seat storage • Walk-thru curved glass windshield
 - Color-coordinated top & boot
- Colors:** Emerald • Blue

V180 SPORT I/O OPTIONS

- Side and aft curtains • Bow cover
- Mooring cover

V180 / V178 VIPER O.B. STANDARDS

- Full instrumentation • 37-gal./24-gal. (V178) built-in gas tank • AM-FM cassette with 2 marine speakers
 - 12-volt accessory plug • Horn • Glove box
 - 3 bass seats • 1 power pedestal • 4 seat base locations • 1 stationary pedestal • Tilt steering
 - Front & rear fiberglass casting platform
 - Two 30-gallon aerated livewells • Bow & stern storage compartments • Bow panel with trolling motor plug
 - Lockable rod storage • Deluxe tackle tray (V178) • 4 stainless steel cleats • Running lights • Bilge pump • Walk-thru curved glass windshield • Color-coordinated top & boot
- Colors:** Emerald • Blue

V180 VIPER O.B. OPTIONS

- Side and aft curtains • Bow cover • Mooring cover



CONQUER THE WAVES

Space Deck Space Ship

FUN



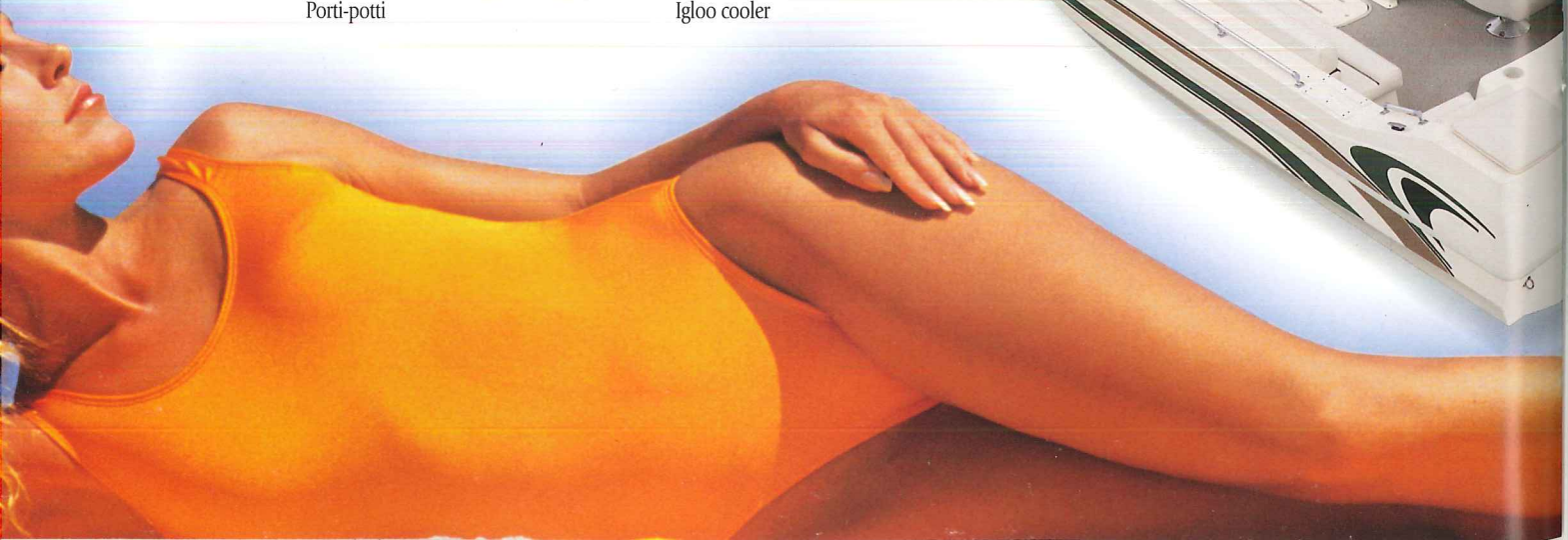
2030 Space Ship I/O



Porti-potti



Igloo cooler





YOUR BEST TIMES...

JUST GOT BETTER!



Space Deck O.B.

2230 SPACE DECK O.B. STANDARDS

- 55-gal. built-in gas tank • Self-bailing fiberglass floor liner • Full instrumentation
 - AM-FM cassette with 4 speakers • 12-volt accessory plug • Hydraulic steering
 - Horn • Cup holders • Rear entry • Bow ladder • Anchor locker • Rope locker
 - Table • Stern ladder • 4 cleats • In-floor storage • Igloo cooler • Running lights
 - Automatic bilge pump • Docking lights • Rear sundeck • 1 captain's chair with slider • Deluxe console with windscreen • Under seat storage • Courtesy lights • Stainless steel rails • Color-coordinated top & boot
- Colors:** Emerald • Blue • Champagne

2230 SPACE DECK O.B. OPTIONS

- Sony radio with 4 speakers • Depth finder • 2 bass seats • Ski tow
- Rod storage • Snap-in berber carpet • Playpen cover • Live well
- Porti-potti • Galley pump



2030 Space Ship I/O

2030 SPACE SHIP I/O STANDARDS

- 55-gal. built-in gas tank • Self-bailing fiberglass floor liner • Full instrumentation
 - AM-FM cassette with 4 marine speakers • 12-volt accessory plug • Tilt steering
 - Horn • Cup holders • Rear entry • Porti-potti • Table • Stern ladder • 4 cleats
 - In-floor storage • Igloo cooler • Running lights • Automatic bilge pump
 - Docking lights • Rear sundeck • 1 captain's chair with slider • Deluxe console with windscreen • Ski eye • Under seat storage • Courtesy lights • Stainless steel rails • Color-coordinated top & boot
- Colors:** Emerald • Blue • Champagne

2030 SPACE SHIP I/O OPTIONS

- Sony radio with 4 speakers • Depth finder • Snap-in berber carpet
- Playpen cover

1500 SPACE SHIP GLX STANDARDS

- 31-gal. built-in gas tank • Fuel gauge, volt gauge & speedometer
 - Stern platform with ladder • 4 cleats • Fiberglass floor liner • In-floor storage • Running lights • Bilge pump • Captain's chair • Windscreen
 - Under seat storage • Full wrap-around bow seating • 2 rear jump seats
 - Cup holders • Stainless steel bow and stern rails
- Colors:** Emerald • Blue • Champagne

1500 SPACE SHIP GLX OPTIONS

- Mooring cover • Color-coordinated top • Snap-in berber carpeting

1500 SPACE SHIP STANDARDS

- 31-gal. built-in gas tank • Fuel gauge, volt gauge & speedometer • Stern platform with ladder
 - 4 cleats • In-floor storage • Running lights • Bilge pump • Captain's chair
 - Windscreen • Under seat storage • Bow cushion • 2 rear jump seats • Cup holders
- Colors:** Emerald • Blue • Champagne

1500 SPACE SHIP OPTIONS

- Mooring cover
- Color-coordinated top



1500 Space Ship GLX

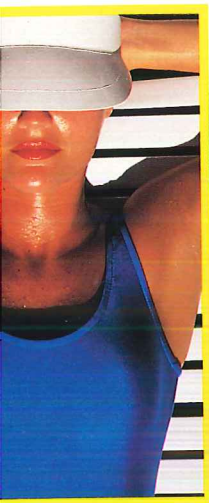
1500 Space Ship



CONQUER THE WAVES

21' Space Deck

RELAX



21' Space Deck Fish 'n' Cruise O.B.



21' Space Deck GLX O.B.





IT'S TIME FOR YOUR...



Sit back, unwind and enjoy a relaxing ride or dream the day away at your leisure.

21' SPACE DECK GLX STANDARDS

55-gal. built-in gas tank • Fiberglass floor liner • Full instrumentation • Sony AM-FM cassette with 4 Sony marine speakers • 12-volt accessory plug • Tilt steering • Horn • Cup holders • Rear entry • Porti-potti • Table • Stern ladder • 4 cleats • In-floor storage • Igloo cooler • Running lights • Automatic bilge pump • Roto-cast seat bases • Rear sundeck • Captain's chair with slider • Deluxe console with windscreen • Galley with seat base • Under seat storage • Rear L-group seating • 2 front wrap-around couches
Colors: Emerald • Blue • Champagne

21' SPACE DECK GLX OPTIONS

Playpen cover • Ski tow • Hydraulic steering

21' SPACE DECK CRUISE STANDARDS

55-gal. built-in gas tank • Fiberglass floor liner • Full instrumentation • Sony AM-FM cassette with 4 marine speakers • 12-volt accessory plug • Tilt steering • Horn • Cup holders • Rear entry • Porti-potti • Table • Stern ladder • 4 cleats • In-floor storage • Igloo cooler • Running lights • Automatic bilge pump • Roto-cast seat bases • Rear sundeck • Captain's chair with slider • Deluxe console with windscreen • Under seat storage • Rear L-group seating • 2 front couches • Color-coordinated top & boot
Colors: Emerald • Blue • Champagne

21' SPACE DECK OPTIONS

Playpen cover • Snap-in carpet • Ski tow • Hydraulic steering

21' SPACE DECK FISH 'N' CRUISE STANDARDS

55-gal. built-in gas tank • Fiberglass floor liner • Full instrumentation • Sony AM-FM cassette with 4 marine speakers • 12-volt accessory plug • Tilt steering • Horn • Cup holders • Rear entry • Porti-potti • Table • Stern ladder • 4 cleats • In-floor storage • Igloo cooler • Running lights • Automatic bilge pump • Roto-cast seat bases • Rear sundeck • Captain's chair with slider • Deluxe console with windscreen • Under seat storage • Rear L-group seating • 2 front couches • 2 bass seats • Livewell with pump & aerator • Color-coordinated top & boot
Colors: Emerald • Blue • Champagne

21' SPACE DECK FISH 'N' CRUISE OPTIONS

Playpen cover • Snap-in carpet • Ski tow • Hydraulic steering



21' Space Deck O.B.

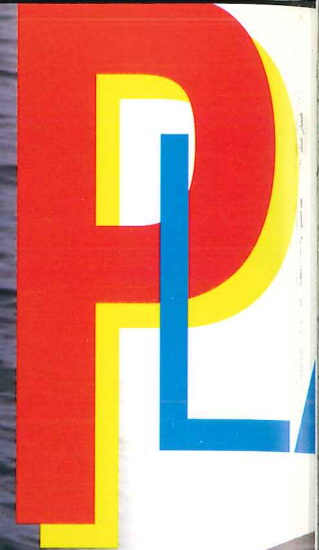
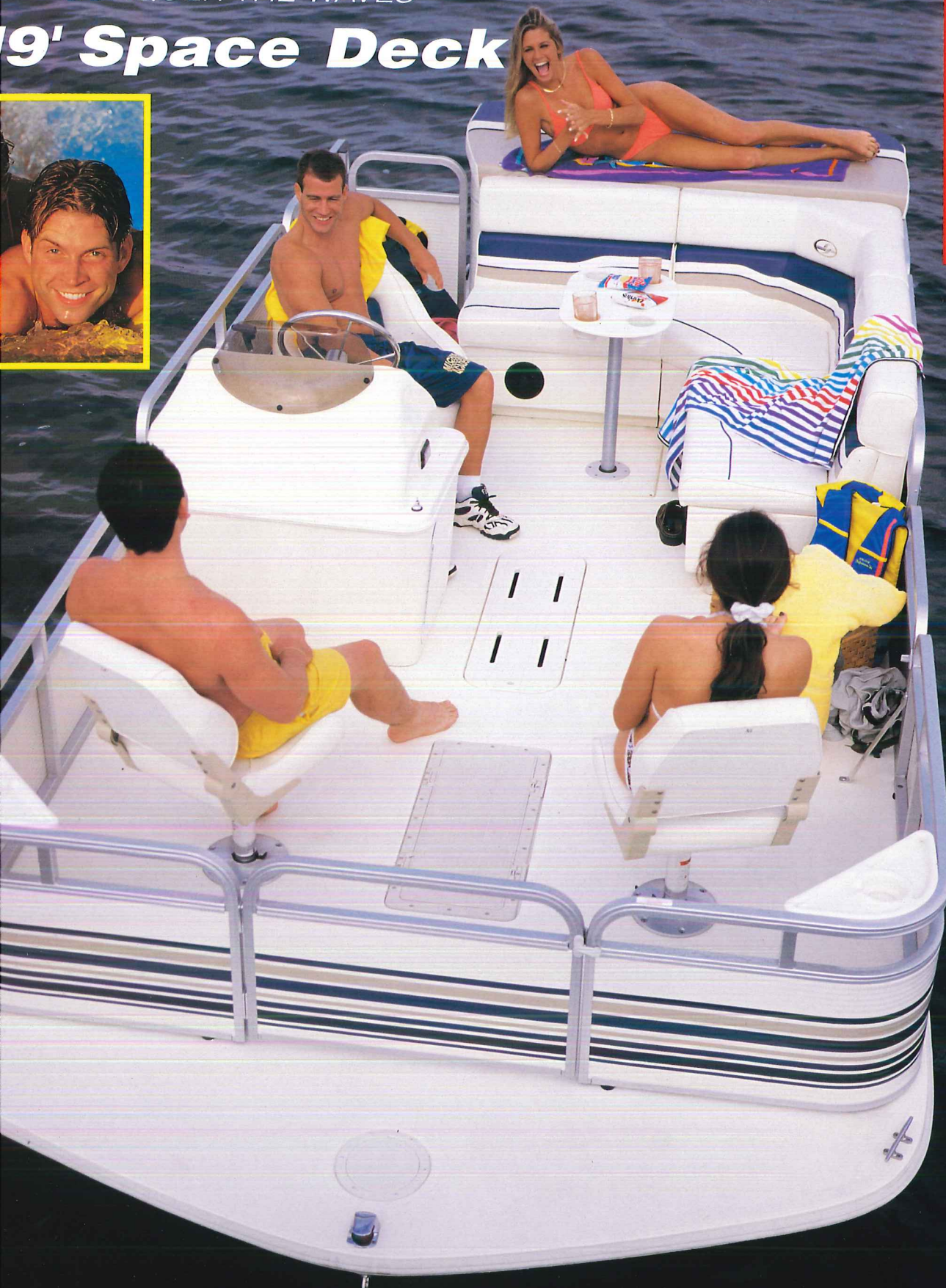


REALITY CHECK



CONQUER THE WAVES

19' Space Deck



19' Space Deck O.B. Fishing Package

PLAYFUL

GREAT FRIENDS...

GOOD TIMES!

Enjoy family, friends and the breeze in your hair as you relax or slip into a playful mood.

19' SPACE DECK CRUISE PACKAGE STANDARDS

30-gal. built-in gas tank • Fiberglass floor liner • Craig AM-FM cassette with 4 marine speakers • Full instrumentation • 12-volt accessory plug • Tilt steering • Horn • Cup holders • Rear entry • Porti-potti • Table • Stern ladder • 4 cleats • In-floor storage • Igloo cooler • Running lights • Automatic bilge pump • Roto-cast seat bases • Rear sundeck • Captain's chair with sliders • Deluxe console with windscreen • Under seat storage • Rear L-group seating • 2 front couches • Color-coordinated top & boot
Colors: Emerald • Blue • Champagne

19' SPACE DECK CRUISE PACKAGE OPTIONS

Playpen cover • Snap-in carpet • Ski tow

19' SPACE DECK FISHING PACKAGE STANDARDS

30-gal. built-in gas tank • Full instrumentation • Fiberglass floor liner • Craig AM-FM cassette with 4 marine speakers • 12-volt accessory plug • Tilt steering • Horn • Cup holders • Rear entry • Porti-potti • Table • Stern ladder • 4 cleats • In-floor storage • Igloo cooler • Running lights • Automatic bilge pump • Roto-cast seat bases • Rear sundeck • Captain's chair with slider • Deluxe console with windscreen • Under seat storage • Rear L-group seating • 2 bass seat units • Livewell with pump & aerator • Color-coordinated top & boot
Colors: Emerald • Blue • Champagne

19' SPACE DECK FISHING PACKAGE OPTIONS

Playpen cover • Snap-in carpet • Ski tow



19' Space Deck O.B. Cruise Package



19' Space Deck O.B. Fishing Package



EVINRUDE
OUTBOARDS



Great times await you and your friends in a Sylvan fiberglass boat. Dreams become reality as you board our quality boats and prepare to "conquer the waves" in 1998.

Let your eyes be your guide as you observe our sleek, well-built boats and our unmistakable graphics. Embrace our array of high-quality features, designed for enjoyment and long-lasting toughness.

Attention to every detail provides unmatched quality from bow to stern. The integrity and pride of our people make the difference in every one of our fiberglass boats as they roll off the assembly line.

Superb craftsmanship and exceptional standards are obvious in our luxurious seats with tailored upholstery, in the plush and long-lasting carpeting and in our fiberglass multiple layering process.

Sylvan is a name you can rely on for fun and safety under the sun. Our solid construction, always enduring features and enticing options provide total comfort and ease of operation for you and your friends.

FEATURES



V196 Console



2030 Space Ship Porti-potti



Hideaway ladder



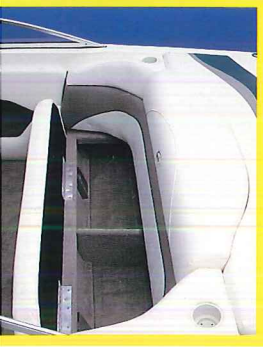
Igloo cooler



You CAN...

CONQUER THE WAVES

COUNT ON SYLVANIA!



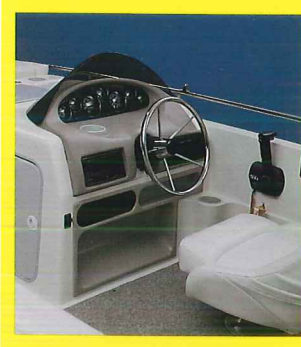
V210 Under seat storage



2100 Space Deck Snap-in carpet

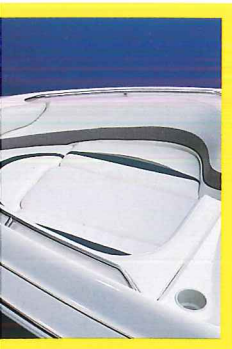


V210 In-floor storage



2030 Space Ship Console

J R E S



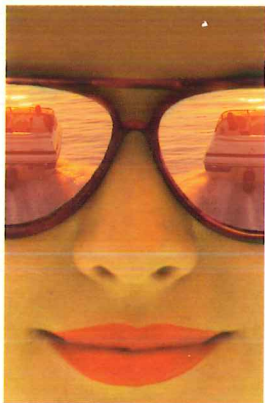
06 Front seating

Model	Center Length	Beam	Maximum H.P.	Weight	Weight Capacity	People Capacity	Draft (drive-up)	Deadrise
V210 Sport I/O	20'10"	102"	250	3035	2300	10	1'8"	22°
V196 Sport I/O	19'6"	96"	230	2400	1565	8	1'6"	19°
V180 Sport I/O	18'6"	96"	230	1400**	1565	8	1'6"	19°
V180 Viper	18'	96"	150*	1275	1915	5	1'6"	19°
V178 Viper	17'8"	88"	150*	1150	1915	5	1'4"	18°
1500 Space Ship	15'4"	90"	100	1075	1600	7	12"	20°
2030 Space Ship I/O	20'	96"	230	1800**	1855	11	1'4"	20°
2230 Space Deck	22'3"	98"	250*	2493	2200	11	1'4"	20°
21' Space Deck	21'3"	96"	200*	1940	2500	12	1'2"	20°
19' Space Deck	18'8"	96"	180*	1720	1800	10	1'2"	20°

*All boats using greater than 125 H.P. O.B.s should have dual or hydraulic steering.

**Less engine.

LIMITED



WARRANTY

Sylvan warrants each new fiberglass hull for a period of five (5) years from the date of purchase by the original purchaser (based on years of use, under normal recommended operating conditions) as described in the warranty folder. A copy of the Sylvan Limited Warranty is attached to each new Sylvan boat, or may be obtained from any Sylvan dealer or the Sylvan factory.

Optional equipment is shown in some photographs used in this catalog. Please confirm standards and options with your dealer. All warranty information is available from your Sylvan dealer or directly from Sylvan Marine. Please write for more information. If you don't find the boat to fit your needs in this brochure, ask your dealer about the other fine boats from Sylvan Marine.

Note: In our continuing efforts to build the best quality boats at affordable prices, it may become necessary during the course of the year to change specifications or materials used in construction. We reserve the right to make changes without prior notification.

**ADVANCE
COPY**

SYLVAN

Sylvan Marine
P.O. Box 65
New Paris, IN 46553
219/831-2950
Fax: 219/831-7012

Sylvan Marine West
P.O. Box 219
Stayton, OR 97383
503/769-2996
Fax: 503/769-5835

Sylvan Marine South
P.O. Box 1267
LaGrange, GA 30241
706/882-1438
Fax: 706/882-9562

Sylvan Marine North
P.O. Box 129
Minong, WI 54859
715/466-5247
Fax: 715/466-5320

Visit us on the Internet at <http://www.SylvanMarine.com>

**MERCURY
OUTBOARDS**

**MARINER
OUTBOARDS**

**Johnson
OUTBOARDS**

**EVINRUDE
OUTBOARDS**