



07

SYLVAN

FISHING BOATS






SERIOUS FISHING

SYLVAN BOATS 07





CONTENTS:	PRO SPORT	07
	ADVENTURER	09
	EXPEDITION SPORT	11
	VIPER	13
	EXPLORER	15
	SELECT, SPORT TROLLER & SUPER SNAPPER	17
	STRIKER, ALASKAN, SEA BREEZE	18
	JONS	19



FOR ALL AGES.

Fishing is often thought of as a solitary pastime. Where's the fun in that? Whether it's your daughter, your father, your brothers or your best buddies, fishing is something to be shared. And the best way to do that is with a fishing boat from the company that's been building them for more than 50 years. Sylvan Marine. Our boats are designed for serious anglers and their families. Our unique raked-back bow provides spacious casting platforms, while our exclusive gull wing hull is designed for exhilarating performance. Multiple livewells, rod storage and bass seats work together with convertible seating and cool looks to create a boat that will keep your whole family happy. And, since it's from Sylvan, you can depend on it for years. So round up the troops and load up the boat. It's time to get serious about the fun of fishing.

CONSTRUCTION

SYLVAN BOATS 07

BUILDING A BETTER BOAT.

It's simple. Sylvan fishing boats operate better because they're built better. Take a moment to check out the quality construction that goes into every one of our fishing boats. You'll see that at each step along the way, we take extra measures to ensure that our boats do more than simply meet your needs — but blow your expectations right out of the water.



07

A CARPET

Our premium grade, 100% UV stabilized marine carpet will last for years to come and is backed by a 5-year warranty.

B XL PLYWOOD FLOORS

With a lifetime warranty, you can count on the specially treated floor to hold its strength and never warp or rot.

C URETHANE FOAM

When you walk on a Sylvan boat, you can feel the solid strength and support of the floor. That's because we fill every cavity with gasoline-resistant urethane foam to eliminate water pockets and give the boat more buoyancy and a quieter ride.

D ADVANCED INTEGRATED RIB SYSTEM

The hull design on many of our boats features a .125 gauge one-piece bottom with .125 gauge hand-fitted ribs on 10" centers, for superior lateral strength. Combine this with the longitudinal strength of five keels, and you get superior impact resistance and better lift, handling and bottom support.

E 5-KEEL CONSTRUCTION

Many of our boats feature five external keels, for the best stability and handling you'll find anywhere. The keels also offer greater protection from underwater objects, as well as from the wear and tear of launching and trailering your boat.



THE GULL WING HULL

Our exclusive hull design keeps the bow down as you accelerate, getting you on plane faster with superior control.





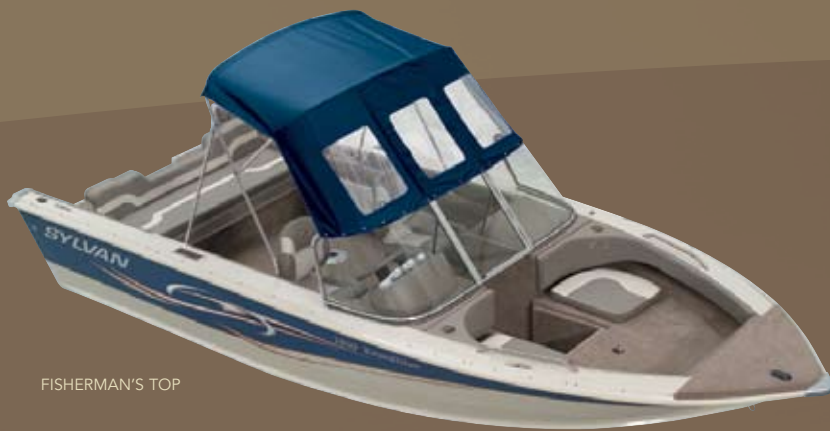
WARRANTY

Sylvan warrants each new aluminum hull for a period of ten (10) years, lifetime warranty on all riveted seams. A copy of the Sylvan Limited Warranty is attached to each new Sylvan boat, or may be obtained from any dealer or the Sylvan factory.



ADVANCED INTEGRATED RIB SYSTEM

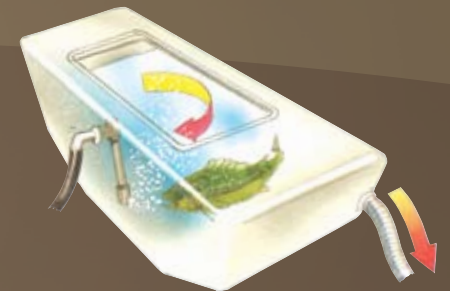
The choice is clear! Our exclusive Advanced Integrated Rib System utilizes hand-fitted, hat-shaped ribs for superior longitudinal strength and rigidity that simply outperforms our competitors' double-plated aluminum.



FISHERMAN'S TOP



FISHERMAN'S TOP WITH AFT AND SIDE CURTAINS AND BOW COVER



FLOW RITE LIVEWELL SYSTEM

This state-of-the-art livewell design helps ensure you get your catch home safely. To begin with, a fill pump draws in water, circulating it at the bottom of the tank, while an air hole in the top of the fill pipe allows air to mix with the water. In addition, a separate recirculating pump works in a continuous loop to keep aerated water moving in the livewell — even when you're refueling or drifting through stagnant waters. The livewell is easy to clean, thanks to a drain system that runs through the transom, not the floor.

KEEPING FOUL WEATHER OUTSIDE, WHERE IT BELONGS.

Thanks to our fisherman's top you can fish comfortably, even when it's raining out. In addition, our complete curtain packages help you get out earlier in the spring and stay out later in the fall — keeping you warm in cooler temperatures. The top comes with a boot for easy storage, and the bow and mooring covers protect your boat from water and debris.



MOORING COVER

PRO SPORT
SYLVAN BOATS 07



Lifetime
Warranty
On All
Riveted
Seams

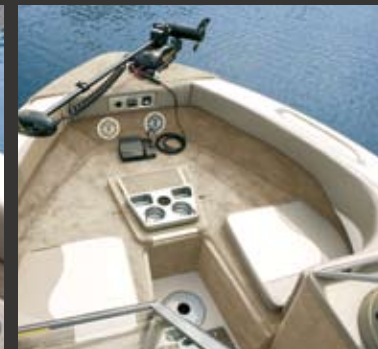
1900 DC



1700 DC



1600 DC



REAR CONVERT-A-BENCH. In the down position as shown, it's perfect for fishing. Flip it up to add roomy and comfortable seating.

DRIVER'S CONSOLE. The sporty driver's console features easy-to-read gauges, an AM/FM stereo with auxiliary port for an Mp3 Player and a tilt steering wheel.

WALK-IN-BOW. The walk-through windshield leads to a spacious bow with cushioned seating for greater versatility.

LIVEWELLS. The Pro Sport boasts generous livewells. The 1900, shown here, has a bow and a stern livewell plus a bait bucket.

SPLIT PERSONALITY

Who says you can't please everyone? The Pro Sport is designed for serious fishing with large platforms, rod storage, fishing seats and livewells. But, a few quick changes and it's the ideal cruising boat, too. Flip up the rear convert-a-seat, and add the optional ski tow and you're ready for a day of fun for the whole family. Now that's versatility.

PRO SPORT SPECIFICATIONS

	LENGTH	BEAM	DEPTH	INTERIOR DEPTH	TRANSOM WIDTH	TRANSOM HEIGHT	DRY WEIGHT LBS.	MAXIMUM PERSONS	MAXIMUM CAP. LBS.	MAXIMUM H.P.	FUEL CAPACITY GAL.	BOTTOM GAUGE	SIDE GAUGE	RIB GAUGE
1900 DC	18'10"	96"	38"	27"	96"	XLS	1,450	8	1,750	175	40	.125	.086	.125
1700 DC	17'1"	91"	35"	25"	90"	LS	1,220	5	1,350	135	31	.100	.086	.100
1600 DC	16'6"	88"	35"	25"	85"	LS	1,080	5	1,300	90	24	.080	.076	.080

All boats using OBs greater than 125 H.P. should have dual or hydraulic steering.

ADVENTURER

SYLVAN BOATS 07

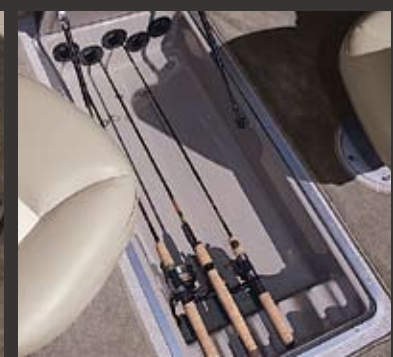


Lifetime
Warranty
On All
Riveted
Seams

1900 DC



1700 DC



LIVEWELLS. When you're on a roll, one just isn't enough. So the Adventurer has two livewells, bow and stern.

DRIVER'S CONSOLE. Large gauges, attractive bezels and a comfortable helm seat make the console stand out.

SNAP-IN CARPET. Snap-in carpet installs easily over the vinyl flooring, adding value and versatility.

ROD STORAGE. In-floor rod storage offers the ultimate protection. There's also port rod storage, along with plenty of spaces to stow your gear.

FULLY LOADED

When it comes to fishing, there are those who dabble in it. Then there are the diehards. The Adventurer is built for the latter. Serious anglers thrill at the sight of this jewel that is made to bring in the big haul. Just take a look at these features — three bass seats, multiple storage areas for rods and gear, bow and stern livewells ... the list goes on and on. Come on, the fish are waiting.

ADVENTURER SPECIFICATIONS

	LENGTH	BEAM	DEPTH	INTERIOR DEPTH	TRANSOM WIDTH	TRANSOM HEIGHT	DRY WEIGHT LBS.	MAXIMUM PERSONS	MAXIMUM CAP. LBS.	MAXIMUM H.P.	FUEL CAPACITY GAL.	BOTTOM GAUGE	SIDE GAUGE	RIB GAUGE
1900 DC	18'10"	96"	38"	27"	96"	XLS	1,460	8	1,750	175	31	.125	.086	.125
1700 DC	17'1"	91"	35"	25"	90"	LS	1,220	5	1,350	135	24	.100	.086	.100

All boats using OBs greater than 125 H.P. should have dual or hydraulic steering.

EXPEDITION SPORT

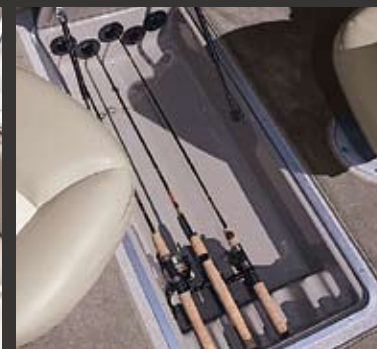
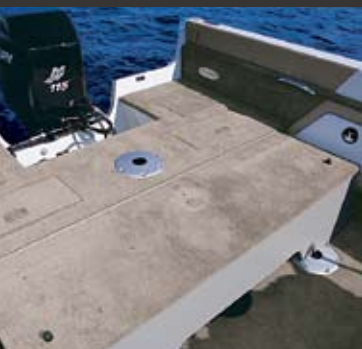
SYLVAN BOATS 07



1800 DC



1700 DC



REAR CONVERT-A-BENCH. When down, the versatile bench gives you plenty of room for casting and setting up a bass seat.

CLOSED BOW. When closed, our innovative bow design creates an ideal casting platform.

WALK-IN BOW WITH CUSHIONS. Shown in the open position, the walk-in bow now provides roomy seating with cushions.

IN-FLOOR ROD STORAGE. There's a lot of storage onboard including this deluxe in-floor rod storage for added security.

DOUBLE THREAT

Here's a boat that does double duty as a serious fishing boat and the family cruiser. All at a great value. It's made for fishing with three bass seats and dual livewells. But there's still room for the family with convertible rear and bow seating. Add the optional ski tow and swim platform to really make it the boat of everyone's dreams.

EXPEDITION SPECIFICATIONS

	LENGTH	BEAM	DEPTH	INTERIOR DEPTH	TRANSOM WIDTH	TRANSOM HEIGHT	DRY WEIGHT LBS.	MAXIMUM PERSONS	MAXIMUM CAP. LBS.	MAXIMUM H.P.	FUEL CAPACITY GAL.	BOTTOM GAUGE	SIDE GAUGE	RIB GAUGE
1800 DC	18'1"	91"	35"	25"	90"	LS	1,250	7	1,625	150	31	.100	.086	.100
1700 DC	17'1"	91"	35"	25"	90"	LS	1,220	5	1,350	135	24	.100	.086	.100

All boats using OBs greater than 125 H.P. should have dual or hydraulic steering.

VIPER

SYLVAN BOATS 07



Lifetime
Warranty
On All
Riveted
Seams

206



180



TROLLING MOTOR PANEL. Gain control with a bow panel that includes the volt motor plug with battery gauge, main motor trim switch, livewell controls and light switches.

DRIVER'S CONSOLE. Get points for style with custom-molded silver metallic dash and a custom steering wheel.

LIVEWELL. The stern holds a huge 39-gallon aerated livewell with remote control plug with battery gauge, main motor trim switch, livewell controls and light switches.

TACKLE TRAY. Nothing compares to the convenience of this recessed three-tray tackle box in the bow.

SMOOTH OPERATOR

Even in rough water and windy conditions it's smooth sailing with the Viper series. These fiberglass beauties combine rugged dependability with high performance, creating a boat that will cut across the water for years to come. Center in-floor rod storage, dual livewells, built-in tackle trays and a large bow casting platform leaves no doubt that this is a boat designed for serious fishing. Of course its cool looks certainly don't hurt.

VIPER SPECIFICATIONS

	LENGTH	BEAM	DEPTH	INTERIOR DEPTH	TRANSOM WIDTH	TRANSOM HEIGHT	DRY WEIGHT LBS.	MAXIMUM PERSONS	MAXIMUM CAP. LBS.	MAXIMUM H.P.	FUEL CAPACITY GAL.
206	20'6"	96"	39"	29"	92"	XLS	1,960	6	2,050	225	50
180	18'0"	96"	39"	29"	92"	XLS	1,763	6	1,950	175	37

All boats using OBs greater than 125 H.P. should have dual or hydraulic steering.

EXPLORER

SYLVAN BOATS 07



Lifetime
Warranty
On All
Riveted
Seams



1700 DC



1700 SC



1600 DC



1600 SC



BOW LIVEWELL. The 30 gallon livewell gives you enough room for a tournament-worthy day of fishing.

DRIVER'S CONSOLE. The driver's console has a sporty look and easy-to-read gauges. You can also choose a dual console model.

STERN LIVEWELL. The 1700 models have an additional aerated livewell on the stern.

ROD STORAGE. No worries about your rods in route to your favorite fishing hole. They tuck safely away in the rod storage area.

SMART MOVE

You've finally found it ... a full-featured fishing boat that won't sink your budget. The Explorer has everything you need — large platforms, bass seats, large livewells, storage to spare and options including snap-in carpet and an AM/FM radio. What's more, the Explorer delivers the same quality construction and lasting durability as our top-of-the-line models. So what are you waiting for? It's the smart move.

EXPLORER SPECIFICATIONS

	LENGTH	BEAM	DEPTH	INTERIOR DEPTH	TRANSOM WIDTH	TRANSOM HEIGHT	DRY WEIGHT LBS.	MAXIMUM PERSONS	MAXIMUM CAP. LBS.	MAXIMUM H.P.	FUEL CAPACITY GAL.	BOTTOM GAUGE	SIDE GAUGE	RIB GAUGE
1700 DC	17'1"	91"	33"	23"	90"	LS	1,130	5	1,350	135	31	.100	.086	.080
1700 SC	17'1"	91"	33"	23"	90"	LS	1,100	5	1,350	135	31	.100	.086	.080
1600 DC	16'2"	82"	33"	21"	77"	LS	880	5	1,275	75	24	.080	.070	.080
1600 SC	16'2"	82"	33"	21"	77"	LS	850	5	1,275	75	24	.080	.070	.080

All boats using OBs greater than 125 H.P. should have dual or hydraulic steering.

SELECT, SPORT TROLLER & SUPER SNAPPER

SYLVAN BOATS 07



**Lifetime
Warranty**
On All
Riveted
Seams

SELECT

SPORT TROLLER

SUPER SNAPPER



1600 SELECT SC

1600 SELECT



1600 SPORT TROLLER

1400 SPORT TROLLER



1600 SUPER SNAPPER

1400 SUPER SNAPPER



SPORT TROLLER ROD STORAGE. The built-in rod storage keeps all your gear organized and safely stowed away.

CASTING ROOM. There's plenty of elbow room so everyone can find the perfect position for casting.

LIVEWELL. There's room for a whole day's worth of fishing in the port side livewell.

BACK TO BASICS

Reliable and well-built with large, aerated livewells and secure rod storage, it hardly seems fair to label these as utility boats. The Sport Troller offers special features such as plush seats, three seat bases and a lockable glove box. Both models have marine-grade carpet with a five-year warranty. And, with Sylvan's 10-year warranty on the aluminum hull, you'll be making the most of this basic boat for a long time.

SELECT SPORT TROLLER SUPER SNAPPER SPECIFICATIONS

	LENGTH	BEAM	DEPTH	INTERIOR DEPTH	TRANSOM WIDTH	TRANSOM HEIGHT	DRY WEIGHT LBS.	MAXIMUM PERSONS	MAXIMUM CAP. LBS.	MAXIMUM H.P.	FUEL CAPACITY GAL.	BOTTOM GAUGE	SIDE GAUGE	RIB GAUGE
1600 SELECT SC	16'0"	81"	33"	25"	74"	LS	725	5	1,250	60	N/A	.080	.064	.080
1600 SELECT	16'0"	81"	33"	25"	74"	LS	700	5	1,250	60	N/A	.080	.064	.080
1600 SPRT	16'10"	69"	33"	22"	59"	LS	555	5	1,100	40	N/A	.064	.060	.064
1400 SPRT	14'5"	67"	30"	19"	59"	LS/SS	475	4	975	25	N/A	.064	.060	.064
1600 SUPSNP	16'5"	70"	31"	22"	63"	LS	460	5	1,100	40	N/A	.064	.060	.064
1400 SUPSNP	14'2"	68"	30"	22"	60"	LS/SS	395	4	1,000	35	N/A	.064	.060	.064

All boats using OBs greater than 125 H.P. should have dual or hydraulic steering.

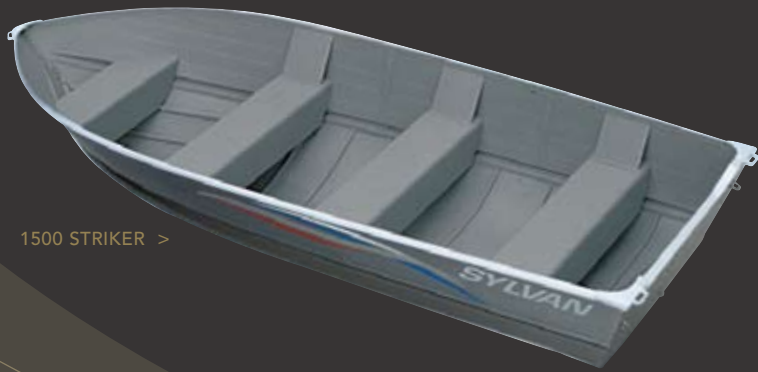
UTILITIES

SYLVAN BOATS 07

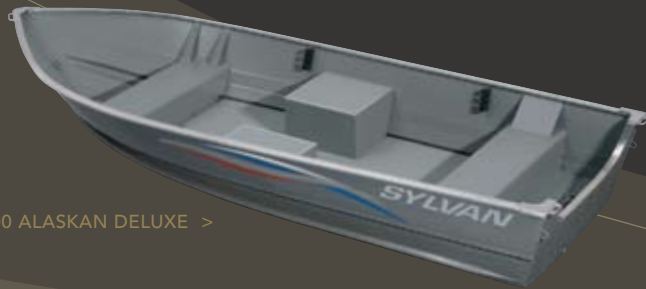
STRIKER, ALASKAN & SEA BREEZE

PURE AND SIMPLE

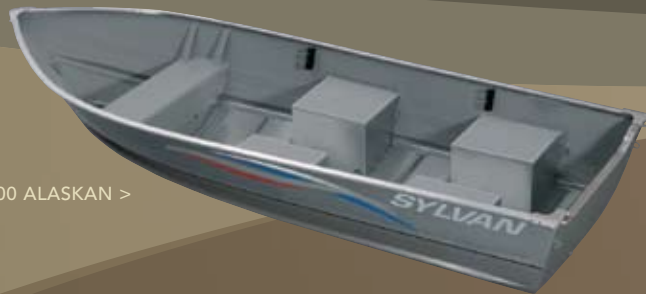
Fishing purists will appreciate the rugged reliability of our Striker, Alaskan and Sea Breeze models. Each comes with a 10-year warranty on the aluminum hull, as well as the added safety of a non-skid interior. It's no-frills fishing at its finest.



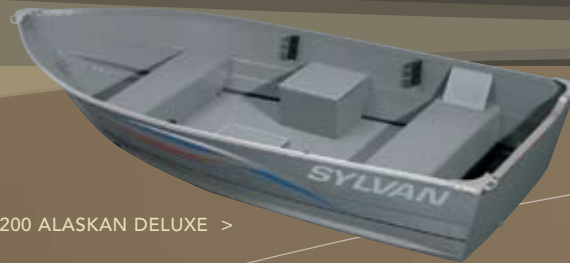
1500 STRIKER >



1500 ALASKAN DELUXE >



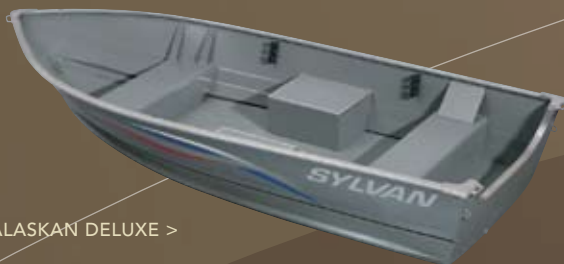
1500 ALASKAN >



1200 ALASKAN DELUXE >



1200 ALASKAN >



1300 ALASKAN DELUXE >



1400 SEA BREEZE >



1200 SEA BREEZE >

	LENGTH	BEAM	DEPTH	INTERIOR DEPTH	TRANSOM WIDTH	TRANSOM HEIGHT	DRY WEIGHT LBS.	MAXIMUM PERSONS	MAXIMUM CAP. LBS.	MAXIMUM H.P.	BOTTOM GAUGE	SIDE GAUGE	RIB GAUGE
STRIKER													
1500 TL	15'5"	72"	32"	32"	61"	LS	290	4	1,100	25	.070	.060	.064
ALASKAN													
15/15 DLX	14'11"	68"	27"	21"	59"	LS/SS	270	4	850	35	.064	.060	.064
13 DLX	12'11"	66"	26"	20"	56"	LS/SS	225	4	700	25	.064	.060	.064
12/12 DLX	11'11"	63"	24"	19"	56"	LS/SS	185	3	700	15	.064	.060	.064
SEA BREEZE													
1400	13'10"	58"	20"	20"	50"	SS	130	4	700	15	.050	.050	.050
1200	11'9"	56"	20"	20"	50"	SS	112	3	600	10	.050	.050	.050

For Striker, Alaskan and Sea Breeze standards & options, please see pages 22 & 23.

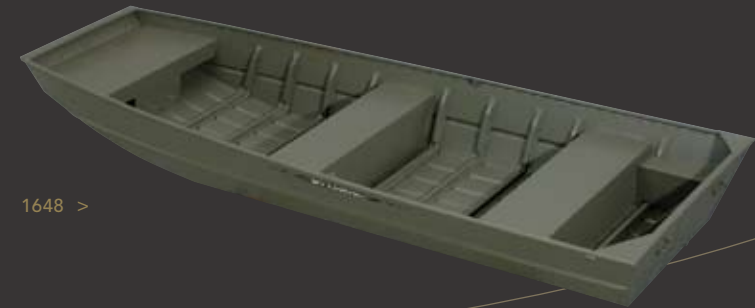
JONS

When it's all about simplicity, get a boat you can trust with rugged Jon boats from Sylvan. Ranging from 10' to 18', you can count on them for years to come.

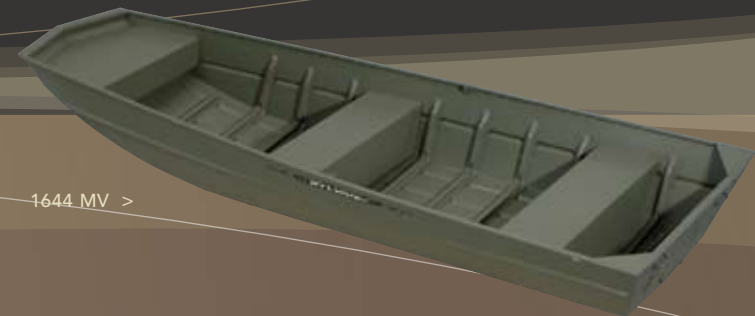
	LENGTH	BEAM	DEPTH	INTERIOR DEPTH	TRANSOM WIDTH	TRANSOM HEIGHT	DRY WEIGHT LBS.	MAXIMUM PERSONS	MAXIMUM CAP. LBS.	MAXIMUM H.P.	BOTTOM GAUGE	SIDE GAUGE
SPORTSMAN												
1860	18'0"	86"	23"	21"	88"	LS	700	6	1,400	80	.100	.100
1660	16'0"	86"	23"	21"	88"	LS	640	6	1,350	65	.100	.100
JON BOAT												
1648	16'0"	72"	22"	22"	71"	LS/SS	295	4	900	35	.072	.072
1644 MV	16'0"	63"	22"	22"	68"	LS	300	4	900	35	.072	.072
1448	14'0"	72"	22"	22"	71"	LS/SS	260	3	900	25	.072	.072
1436	14'0"	57"	18"	18"	56"	SS	185	3	650	20	.064	.064
1432	14'0"	51"	16"	16"	50"	SS	140	2	390	7	.050	.050
1232	12'0"	51"	16"	16"	50"	SS	120	2	390	6	.050	.050
1032	10'0"	51"	16"	16"	50"	SS	100	2	290	3	.050	.050



1660 SPORTSMAN >



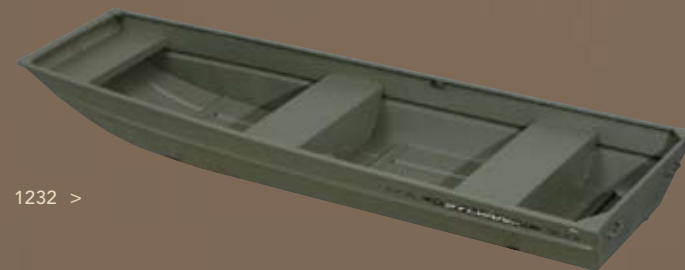
1648 >



1644 MV >



1432 >



1232 >



1436 >



	1900 DC PRO SPORT	1700 DC PRO SPORT	1600 DC PRO SPORT	1900 DC ADVENTURER	1700 DC ADVENTURER	1800 DC EXPEDITION SPORT	1700 DC EXPEDITION SPORT	1700 DC EXPLORER	1700 SC EXPLORER	1600 DC EXPLORER	1600 SC EXPLORER	206 VIPER	180 VIPER
SEATING (continued)													
Bow Backrest w/Cushions	S	S	—	—	—	S	S	—	—	—	—	—	—
Seat Bases	(6)	(6)	(6)	(6)	(6)	(6)	(6)	(6)	(6)	(5)	(5)	(5)	(5)
Bass Seats	(3)	(3)	(3)	(3)	(3)	(3)	(3)	(3)	(3)	(3)	(3)	(3)	(3)
Additional Bass Seat	O	O	O	O	O	O	O	O	O	O	O	O	O
Stem (Hydraulic)	O	—	—	—	—	—	—	—	—	—	—	O	O
Aluminum Bench Seats	—	—	—	—	—	—	—	—	—	—	—	—	—
Aluminum Split Seats	—	—	—	—	—	—	—	—	—	—	—	—	—
STORAGE													
Center Rod Storage (In Floor)	—	—	—	S	S	S	S	—	—	—	—	S	S
Port Rod Storage (Lighted)	S	S	—	—	—	—	—	—	—	—	—	—	—
Starboard Rod Storage (Lighted)	S	S	—	—	—	—	—	—	—	—	—	—	—
Port Rod Storage	—	—	S	S	S	S	—	S	S	S	S	—	—
Starboard Rod Storage	—	—	S	—	—	—	—	—	—	—	—	—	—
Starboard Side Storage	—	—	—	S	S	S	S	S	S	S	S	—	—
Console Storage	S	S	S	S	S	S	S	—	—	—	—	S	S
Rod Holders	—	—	—	—	—	—	—	—	—	—	—	—	—
Bow Storage	S	S	S	S	S	S	S	S	S	S	S	S	S
Stern Storage	S	S	S	S	S	S	S	—	—	—	—	S	S
Starboard Storage	—	—	—	—	—	—	—	—	—	—	—	S	S
In-Floor Storage	S	S	—	—	—	—	—	—	—	—	—	S	—
MISCELLANEOUS													
Bow & Stern Castings w/Handles	—	—	—	—	—	—	—	—	—	—	—	—	—
Oar Locks	—	—	—	—	—	—	—	—	—	—	—	—	—
Nonskid Interior	—	—	—	—	—	—	—	—	—	—	—	—	—
Lockable Glove Box	S	S	S	S	S	S	S	S	—	—	—	S	S
Glove Box	—	—	—	—	—	—	—	—	—	S	—	—	—
Toe Kicks	S	S	S	S	—	S	—	—	—	—	—	—	—
Reinforced for Downriggers	S	S	—	S	S	—	—	—	—	—	—	—	—
Bilge Pump	S	S	S	S	S	S	S	S	S	S	S	S	S
Swim Platform	O	O	—	O	O	O	O	—	—	—	—	—	—
Ski Tow	O	O	—	O	O	O	O	—	—	—	—	—	—
Tackle Tray	—	—	—	—	—	—	—	—	—	—	—	S	S
Dual Steering	—	—	—	—	—	O	—	—	—	—	—	—	—
Hydraulic Steering	S	—	—	S	—	O	—	—	—	—	—	S	S
Tilt Steering	S	S	S	S	S	S	S	—	—	—	—	S	S
Anti-Feedback Steering	—	O	—	—	O	S	O	—	—	—	—	—	—
Stainless Steel Bow Rail	S	S	—	—	—	S	S	—	—	—	—	—	—
Twice Baked Urethane Paint	S	S	S	S	S	S	S	S	S	S	S	—	—
CUP HOLDERS													
Cup Holders	S	S	S	S	—	S	S	S	S	S	S	S	S
BATTERY/ACCESS													
8" Access Plate	S	S	S	S	S	S	S	S	S	S	S	S	S
Battery Charger Ready	O	O	O	O	O	O	O	O	O	O	O	—	—
Battery Compartments	(3)	(3)	(3)	(3)	(3)	(3)	(3)	(3)	(3)	(2)	(2)	(3)	(2)
FUEL TANK													
In-Floor Fuel Tank (Gallons)	(40)	(31)	(24)	(31)	(24)	(31)	(24)	(31)	(31)	(24)	(24)	(50)	(50)
CANVAS													
Fisherman's Top	S	O	O	O	O	O	O	O	—	O	—	O	O
Side Curtains	O	O	O	O	O	O	O	O	—	O	—	O	O
Aft Curtains	O	O	O	O	O	O	O	O	—	O	—	O	O
Walk-Through Curtains	O	O	O	O	O	O	O	O	—	O	—	O	O
Bow Cover	O	O	O	O	O	O	O	O	—	O	—	O	O
Mooring Cover	O	O	O	O	O	O	O	O	O	O	O	O	O

S | standard O | optional — | not available on this model

* Only Available with Deluxe.

	1600 SC SELECT	1600 T SELECT	1600 SPORT TROLLER	1400 SPORT TROLLER	1600 SUPER SNAPPER	1400 SUPER SNAPPER	1500 STRIKER	15 ALASKAN 15 ALASKAN	13 ALASKAN DELUXE	12 ALASKAN DELUXE	1400 SEA BREEZE	1200 SEA BREEZE
SEATING (continued)												
Bow Backrest w/Cushions	—	—	—	—	—	—	—	—	—	—	—	—
Seat Bases	(4)	(3)	(3)	(3)	(2)	—	—	—	—	—	—	—
Bass Seats	(2)	(2)	(2)	(2)	—	—	—	—	—	—	—	—
Additional Bass Seat	O	O	O	O	O	—	—	—	—	—	—	—
Stem (Hydraulic)	—	—	—	—	—	—	—	—	—	—	—	—
Aluminum Bench Seats	—	—	—	—	—	—	S	S	S	S	S	S
Aluminum Split Seats	—	—	—	—	—	—	—	S	S	S*	—	—
STORAGE												
Center Rod Storage (In Floor)	—	—	—	—	—	—	—	—	—	—	—	—
Port Rod Storage (Lighted)	—	—	—	—	—	—	—	—	—	—	—	—
Starboard Rod Storage (Lighted)	—	—	—	—	—	—	—	—	—	—	—	—
Port Rod Storage	—	—	—	—	—	—	—	—	—	—	—	—
Starboard Rod Storage	—	—	S	S	—	—	—	—	—	—	—	—
Starboard Side Storage	—	—	—	—	S	S	—	—	—	—	—	—
Console Storage	—	—	—	—	—	—	—	—	—	—	—	—
Rod Holders	—	—	—	—	S	S	—	S	S	S	—	—
Bow Storage	S	S	S	S	S	—	—	—	—	—	—	—
Stern Storage	—	—	—	—	—	—	—	—	—	—	—	—
Starboard Storage	—	—	—	—	—	—	—	—	—	—	—	—
In-Floor Storage	—	—	—	—	—	—	—	—	—	—	—	—
MISCELLANEOUS												
Bow & Stern Castings w/Handles	—	—	—	—	—	—	S	S	S	S	S	S
Oar Locks	—	—	—	—	—	—	S	—	—	—	S	S
Nonskid Interior	—	—	—	—	—	—	S	S	S	S	S	S
Lockable Glove Box	—	—	S	S	—	—	—	—	—	—	—	—
Glove Box	—	—	—	—	—	—	—	—	—	—	—	—
Toe Kicks	—	—	—	—	—	—	—	—	—	—	—	—
Reinforced for Downriggers	—	—	—	—	—	—	—	—	—	—	—	—
Bilge Pump	S	S	S	S	S	—	—	—	—	—	—	—
Swim Platform	—	—	—	—	—	—	—	—	—	—	—	—
Ski Tow	—	—	—	—	—	—	—	—	—	—	—	—
Tackle Tray	—	—	—	—	—	—	—	—	—	—	—	—
Dual Steering	—	—	—	—	—	—	—	—	—	—	—	—
Hydraulic Steering	—	—	—	—	—	—	—	—	—	—	—	—
Tilt Steering	—	—	—	—	—	—	—	—	—	—	—	—
Anti-Feedback Steering	—	—	—	—	—	—	—	—	—	—	—	—
Stainless Steel Bow Rail	—	—	—	—	—	—	—	—	—	—	—	—
Twice Baked Urethane Paint	S	S	—	—	—	—	—	—	—	—	—	—
CUP HOLDERS												
Cup Holders	—	—	—	—	—	—	—	—	—	—	—	—
BATTERY/ACCESS												
8" Access Plate	—	—	—	—	—	—	—	—	—	—	—	—
Battery Charger Ready	—	—	—	—	—	—	—	—	—	—	—	—
Battery Compartments	—	—	—	—	—	—	—	—	—	—	—	—
FUEL TANK												
In-Floor Fuel Tank (Gallons)	—	—	—	—	—	—	—	—	—	—	—	—
CANVAS												
Fisherman's Top	—	—	—	—	—	—	—	—	—	—	—	—
Side Curtains	—	—	—	—	—	—	—	—	—	—	—	—
Aft Curtains	—	—	—	—	—	—	—	—	—	—	—	—
Walk-Through Curtains	—	—	—	—	—	—	—	—	—	—	—	—
Bow Cover	—	—	—	—	—	—	—	—	—	—	—	—
Mooring Cover	O	O	O	O	O	O	O	O	O	O	—	—

S | standard O | optional — | not available on this model

* Only Available with Deluxe.



07

SYLVAN



TO TALK TO THE DEALER NEAREST YOU, DIAL 866-766-9698.
Connects directly to dealer. Please call during business hours.

www.sylvanmarine.com

The specifications of any Sylvan boat are subject to change without notice.

SYLVAN
P.O. Box 65
New Paris, IN 46553

SYLVAN WEST
P.O. Box 219
Stayton, OR 97383

SYLVAN SOUTH
P.O. Box 1267
LaGrange, GA 30241

SYLVAN NORTH
P.O. Box 129
Minong, WI 54859